

**Title: BRECHIN COMMUNITY CAMPUS**  
**Client: ANGUS COUNCIL**  
**Location: BRECHIN, ANGUS**



**Project team:** Robertson Capital Projects/hub East Central Scotland, Robertson Tayside (Contractor), JM Architects (Architect), Fairhurst (Civil & Structural), Hulley & Kirkwood (Building Services), Hardies (Principle Designer)

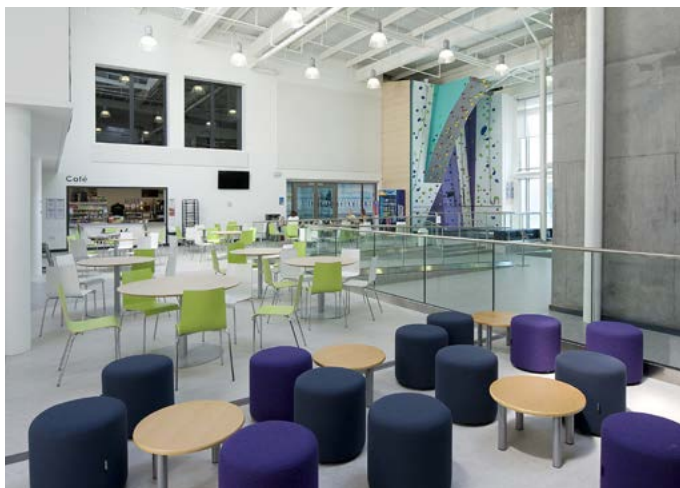
The Brechin Community Campus provides both education and community leisure services over some 11,200 m<sup>2</sup> of building, supported within a modern teaching and leisure environment.

*“Making sure everyone has access to affordable homes is a priority for the Scottish Government, and this development is a fantastic example of how different organisations can work together to develop new affordable homes but also to help boost and regenerate town centre locations.”*

Minister for Housing Kevin Stewart MSP

## Key statistics

- **VALUE:** £25,498,416.54
- **COMPLETION DATE:** 18 January 2017
- **CONTRACT DATES:** Phase 1 - 19 February 2016  
Phase 2 - 23 December 2016
- **CARBON FOOTPRINT:** BREEAM GOOD  
EPC Rating ‘B’
- **COMMUNITY INVOLVEMENT:** The new development comprises a Community Campus, designed to provide modern, multi-functional and sustainable facilities, supporting a variety of service providers jointly utilising the facilities both during and out-with the school day.
- **TOTAL USERS/RESIDENTS:** Service providers include: Angus Council Education Service: delivering the secondary school curriculum (for up to 800 pupils); Angus College: delivering vocational learning courses; Angus Council Community Learning & Development Service: delivering a range of young people/adult learning and support services; and Angus Council Neighbourhood Services: delivering a range of leisure related sports and recreation activities.
- **REPLACEMENT DETAILS:** Replaced existing Brechin High
- **LOCAL EMPLOYEES:** 554 of 1165 employed on the project resided locally



## Facilities include

- 25m five-lane swimming pool
- Health suite with sauna and steam room
- Climbing wall
- Main sports hall
- Gymnasium
- 40 station fitness suite
- Two studios
- Crèche
- Grass athletics track
- Synthetic pitch
- Café and theatre

The building is to be in use 362 days of the year.

*“This is a modern, fit-for-purpose community campus delivering first-rate facilities and an outstanding learning environment for all ages. As a focal point for Brechin, the new campus provides the very best of modern facilities and is a campus that residents can be proud of. Today’s official opening demonstrates the Councils commitment to delivering unrivalled education facilities for the whole community.”*

Councillor Iain Gaul